



Imperial Community College District

Citizens Bond Oversight Committee
Meeting

October 20, 2011

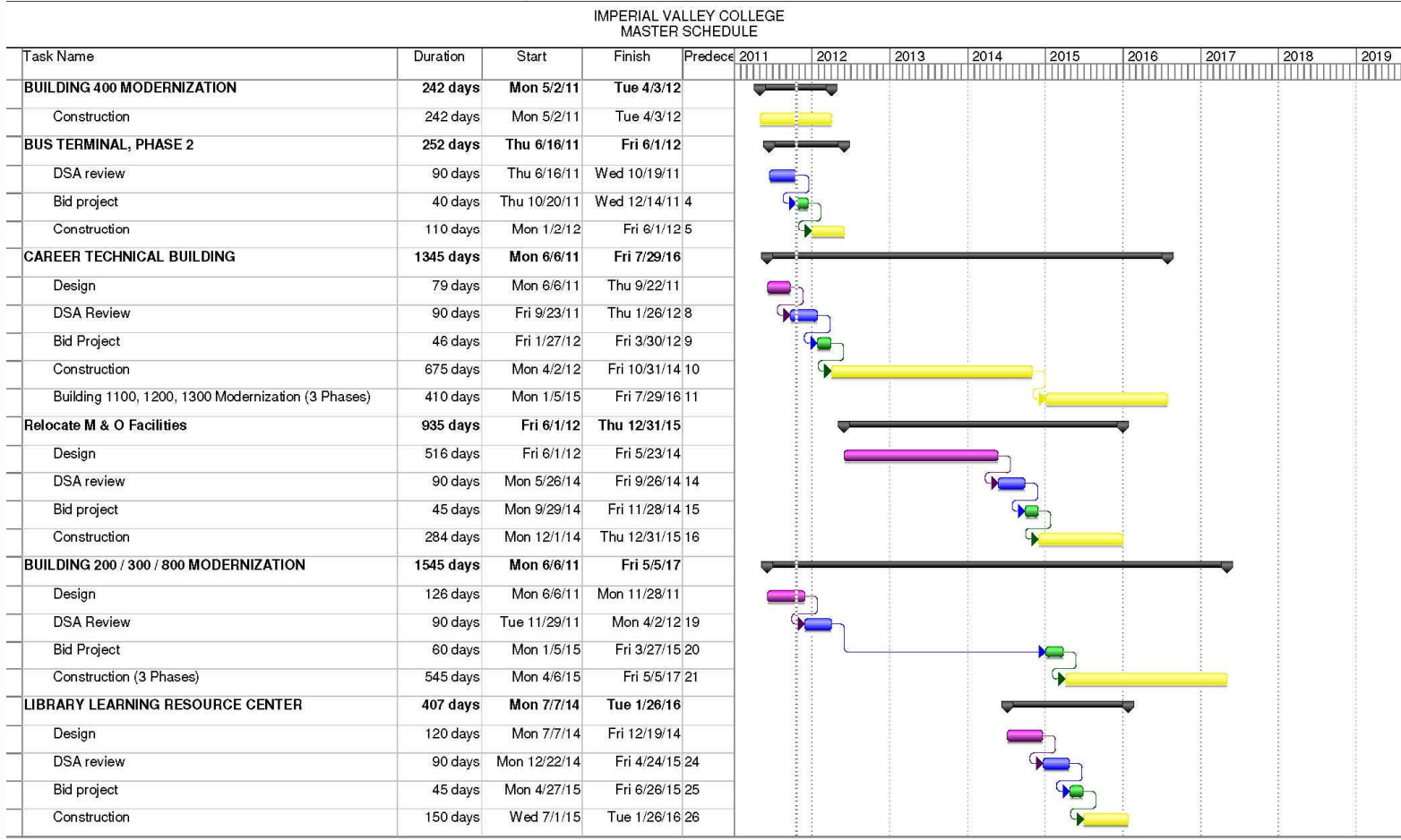


Program Status

- Building 400 Modernization
 - **Description:** Modernization of existing concrete masonry structure
 - **Status:** Construction in progress, completion scheduled for Spring 2012
- Bus Terminal Phase II
 - **Description:** Construction of para-transit bus and vehicular passenger loading and unloading area. Includes new hardscape area at south side of gymnasium, shades at loading and unloading areas and emergency talk-a-phone
 - **Status:** Construction start in January 2012, completion scheduled for Summer 2012
- Career Technical Building New Construction and Modernization
 - **Description:** Construction of new construction trade labs and modernization of existing 1100, 1200, and 1300 buildings
 - **Status:** Project submitted to the Division of State Architect (DSA), construction start in Spring 2012
- Building 200, 300, and 800 Modernization
 - **Description:** Modernization of existing concrete masonry structures. Existing space allocation includes lecture classrooms, labs, offices and supporting spaces
 - **Status:** Production of plans in progress
- LLRC, Technology Building
 - **Description:** New construction of library and technology building to provide central location for all campus computer labs currently spread through out campus
 - **Status:** Design in progress. Submitted to State Chancellor's Office in July 2012



Program Schedule



Note: The program schedule is dependent on State funding availability to advance projects (e.g. 2012 State Bond Measure)



Design	[Pink]
DSA Review	[Blue]
Bidding	[Green]
Construction	[Yellow]

Main Campus Bus Transfer Terminal Improvements

Site Plan



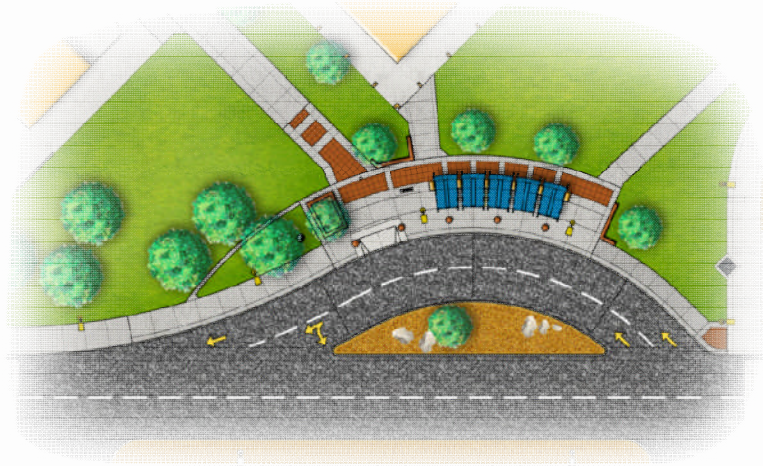


Gymnasium South Entrance Hardscape & Elevation Enlarged Plan





Paratransit Drop-off



Vehicle Drop-off



Vehicle Drop-off Elevation

Measure "L" Recap (as of September 30, 2011)

Bond Measure L - Fund 080									
	2004-05	2005-06	2006-07	2007-08	2008-09	2009-10	2010-11	2011-12	Total
Beginning Balance		\$24,725,522	\$21,654,875	\$30,699,375	\$35,693,416	\$31,168,530	\$12,087,020	\$8,501,756	
Income									
Bond Proceeds - Measure L	\$25,235,000		\$13,301,443	\$11,934,374	\$8,898,698				\$59,369,515
Transfers (to Bond interest and redemption fund)		-\$610,368		-\$15,970					-\$626,338
Other Income		\$43,950		\$15,300		\$1,344,024	\$143,766	\$864,812	\$2,411,852
Interest	\$98,531	\$580,859	\$682,888	\$942,601	\$1,757,514	\$408,578	\$170,431	\$22,524	\$4,663,926
Total Income	\$25,333,531	\$14,441	\$13,984,331	\$12,876,305	\$10,656,212	\$1,752,602	\$314,197	\$887,336	\$65,818,955
Expense									
Purchase Orders	\$172,158	\$2,389,351	\$4,153,077	\$8,375,178	\$14,956,530	\$20,613,411	\$3,890,976	\$1,731,319	\$56,282,000
Payroll		\$91,838	\$102,018	\$108,014	\$112,125	\$112,710	\$8,485	\$6,171	\$541,360
Transfers (of expense to/from other fund)	\$55,279	-\$72,218		-\$600,928	\$112,444	\$107,990			-\$397,433
Debt Payments **	\$380,572	\$676,118	\$684,736	--	--	--	--		\$1,741,426
Total Expense	\$608,009	\$3,085,088	\$4,939,831	\$7,882,264	\$15,181,098	\$20,834,111	\$3,899,461	\$1,737,490	\$58,167,353
Ending Balance	\$24,725,522	\$21,654,875	\$30,699,375	\$35,693,416	\$31,168,530	\$12,087,020	\$8,501,756	\$7,651,602	\$7,651,602

Measure
2004
L



Measure "L" Expenditures (as of September 30, 2011)

Project	Account	Budget	2010-11 Expenditures (on-going projects)	2011-12 Expenditures (Detail)	2011-12 Expenditures as of 9-30-11	Balance
400 Building Modernization		\$6,581,688	\$271,922		\$1,383,588	\$4,926,178
Consulting & Architect Services	5110			\$198,975		
Permits and Bio-assay	5830			\$31,900		
Site and Sites Improvements	6130			\$1,152,713		
Bus Terminal Phase II		\$1,708,300	\$0		\$0	\$1,708,300
Building 200, 300, 800 Modernization**		\$10,800,000	\$0		\$85,763	\$10,714,237
Consulting & Architect Services	5110			\$85,763		
Aten Rd/Hwy 111 signal project		\$1,600,000	\$1,323,121		\$234,631	\$42,247
Facility/Equipment Rental Expense	5630			\$9,124		
Permits and Bio-assay	5830			\$713		
Site and Sites Improvements	6130			\$224,795		
Parking Lot Phase IV		\$1,201,300	\$737,365		\$13,432	\$450,504
Site and Sites Improvements	6130			\$13,432		
Building 10 Modernization						
Site and Sites Improvements	6130	\$308,400	\$256,795		\$1,192	(\$932)
Consulting & Architect Services			\$7,055			
Furniture	6490		\$51,345			
Instructional Supplies and Material				\$1,192		
Furniture & Equipment		\$0	\$0		\$12,713	(\$12,713)
Instructional Supplies and Material	4320			\$209		
Capital Equipment	6590			\$12,504		
TOTAL		\$22,199,688	\$2,647,603		\$1,731,319	\$17,827,821

400 Building (50% state funding) \$2,000,000

Bus Terminal Phase II (PTMISEA funds) \$1,200,000

**Building 200, 300, 800 Modernization dependent on obtaining State funding

Measure "J" Recap (as of September 30, 2011)

Bond Measure J - Fund 081	2010-11	2011-12	Total
Beginning Balance		\$23,282,173	
Income			
Bond Proceeds - Measure J	\$23,406,468		\$23,406,468
Interest		\$51,372	\$51,372
			\$0
Total Income	\$23,406,468	\$51,372	\$23,457,840
Expense			
Purchase Orders	\$124,295	\$665,511	\$789,807
			\$0
Total Expense	\$124,295	\$665,511	\$789,807
Ending Balance	\$23,282,173	\$22,668,033	\$22,668,033

Measure
2010
J



Measure “J” Expenditures (as of September 30, 2011)

Project	Account	Budget	2010-11 Expenditures (on-going projects)	2011-12 Expenditures (Detail)	2011-12 Expenditures as of 9-30-11	Balance
Career Technical		\$23,400,000	\$124,295		\$494,499	\$22,781,205
Consulting & Architect Services	5110			\$494,499		
Building 200, 300, 800 Modernization		\$171,012	\$0		\$171,012	\$0
Consulting & Architect Services	5110			\$171,012		
TOTAL		\$23,571,012	\$124,295		\$665,511	\$22,781,205



The Look Ahead

- Complete Construction of Building 400 Modernization Project
- Review Career Technology Building for value engineering opportunities and constructability
- Obtain DSA approval of Career Technology Building
- Continue Local Participation Outreach Program to local trade contractors and suppliers
- Continue planning efforts for the Bus Terminal Phase II, M&O Facilities Relocation, and Buildings 200, 300 and 800 Modernization Projects
- Continue to seek other funding sources for projects

