

ANTHROPOLOGY (For Transfer)

DEGREES, CERTIFICATES AND AWARDS

Associate in Arts Degree in Anthropology for Transfer (AA-T)

DESCRIPTION

Anthropology is the study of ancient and modern human beings and their ways of living. Its perspective is biological, social and comparative, encompassing all aspects of human existence from the most ancient societies to those of the present day. The courses are designed to stimulate critical thinking about existing stereotypes regarding the people around us in the world now and those who came before. Cultural Anthropology studies human behavior to understand the cultural values that guide the behaviors. Archaeology examines the material record of human activity in order to understand how ideas change over time. Physical Anthropology (also called Biological Anthropology) is the study of human evolution which includes human biological diversity.

The Associate in Arts for Transfer (AA-T) is intended for students who plan to complete a bachelor's degree in a similar major at a CSU campus. Students completing this degree (AA-T) are guaranteed admission to the CSU system, but not to a particular campus or major.

PROGRAM LEARNING OUTCOMES

1. Global Cultural Diversity by recognizing the various social institutions, linguistic diversity, the ways societies have adapted to different environments, and modern and traditional health care system. (Cultural Anthropology)
2. Global Biological Diversity by critically analyzing the evolutionary history of humankind through the fossil record, and the current biological diversity based on scientific evidence of environmental adaptation and the study of genetics. (Biological/Physical Anthropology)
3. Cultural change and development by comparing and contrasting the different stages of cultural development at various geographic regions of the world and the causal factors that lead towards civilizations, monumental architecture, writing, and social stratification. (Archaeology)
4. Comparing and contrasting the Indigenous Cultures of North America, their prehistory, language and social diversity, mythology, and adaptation to a diverse geography and environment. (American Indian Studies)

ASSOCIATE DEGREE PROGRAM (For Transfer)

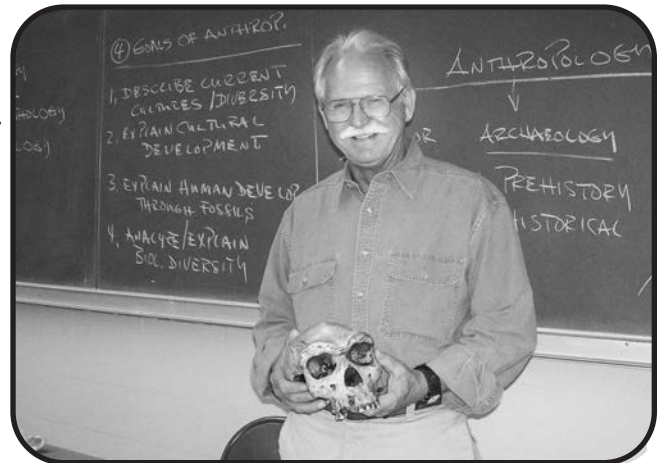
The Associate in Arts for Transfer (AA-T) or the Associate in Science for Transfer (AS-T) degree is intended for students who plan to complete a bachelor's degree in a similar major at a CSU campus. Students completing these degrees (AA-T or AS-T) are guaranteed admission to the CSU system, but not to a particular campus or major. In order to earn one of these degrees, students must complete 60 semester units of CSU transferable coursework with a minimum GPA of 2.0. Students transferring to a CSU campus that does accept the AA-T or AS-T will be required to complete no more than 60 units after transfer to earn a bachelor's degree (unless the major is a designated "high-unit" major). This degree may not be the best option for students intending to transfer to a particular CSU campus or to university or college that is not part of the CSU system. Students should consult with a counselor when planning to complete this degree for more information on university admission and transfer requirements.

CAREER OPPORTUNITIES

Of the career opportunities identified many will usually require the completion of degree requirements at 4-year colleges and universities.

- Archaeologist
- Linguist
- Museum Curator
- Health Researcher
- Redevelopment Specialist
- Industrial Consultant
- Artifacts Conservator
- Resource Manager
- Environmental Impact Analyst
- Ethnic Relations Specialist
- Population Analyst
- Urban Planner
- Exhibit Designer
- Expedition Guide
- Film Ethnographer
- Social Gerontologist
- College Faculty Member
- Bilingual Education Consultant
- Medical Anthropologist
- Primatologist
- Zoo Director
- Museum Program Director
- Museum Registrar
- Forensic Anthropologist
- Folklorist

Gainful Employment: Federal regulations require institutions to provide students with Gainful Employment information for specific certificate programs offered at IVC. Please click on our Programs of Study link to view the information for each certificate program: <http://www.imperial.edu/courses-and-programs/programs-of-study/>



TRANSFER PREPARATION

Courses that fulfill major requirements for an associate degree at Imperial Valley College may not be the same as those required for completing the major at a transfer institution offering a bachelor's degree. Students who plan to transfer to a four-year college or university should schedule an appointment with an IVC Counselor to develop a student education plan (SEP) before beginning their program.

Transfer Resources:

www.ASSIST.org – CSU and UC Articulation Agreements and Majors Search Engine

www.CSUMentor.edu – CSU System Information

www.universityofcalifornia.edu/admissions/index.html – UC System Information

www.aiccu.edu – California Independent Colleges and Universities, Association of

<http://wiche.edu/wue> – Western Undergraduate Exchange Programs

FINANCIAL AID

Paying for the cost of a college education requires a partnership among parents, students and the college. As the cost of higher education continues to rise we want you to know that IVC offers a full array of financial aid programs – grants, work study, scholarships, and fee waivers (we do not participate in the federal loan programs). These programs are available to both full and part time students who are seeking a degree or certificate. For those who qualify, financial aid is available to help with tuition, fees, books and supplies, food, housing, transportation, and childcare. Please log onto our website for additional information: www.imperial.edu/students/financial-aid-and-scholarships/

ANTHROPOLOGY (For Transfer)

ASSOCIATE DEGREE PROGRAM

ANTHROPOLOGY

Associate in Arts Degree in Anthropology for Transfer (AA-T) – 19.0-20.0 units

ALL COURSES FOR THIS MAJOR MUST BE COMPLETED WITH A MINIMUM GRADE OF "C" OR BETTER.

REQUIREMENTS FOR THE DEGREE

- I. **Units/GPA** – Must complete 60 CSU transferable semester units with a minimum grade point average (GPA) of at least 2.0 in all CSU transferable coursework. *NOTE: While a minimum of 2.0 is required for admission, some institutions and majors may require a higher GPA. Please consult with a counselor for more information.*
- II. **General Education** – Must complete one of the following general education transfer patterns:
 - A. California State University General Education Breadth Pattern (CSU GE-B) – 39 units minimum
 - B. Intersegmental General Education Transfer Curriculum (IGETC) – 37 units minimum
- III. **Nineteen to Twenty (19-20) units required for the major.**

Required for the Major (13.0 units)			
ANTH	100	Physical Anthropology	3.0
ANTH	102	Cultural Anthropology	3.0
ANTH	120	Introduction to Archaeology	3.0
List A. Select one (4.0 units)			
MATH	119	Elementary Statistics	4.0
List B. Select one course (3.0-4.0 units)			
GEOL	100	General Geology (4.0)	3.0-4.0
PSY	212	Research Methods in Psychology (3.0)	
List C. Select one course (3.0 units)			
Any course from List B not already used.			
AIS/ANTH	106	Indians of North America (3.0)	
AIS/ANTH	108	Indians of the Southwest (3.0)	
HIST/LAS	130	Early Latin America (3.0)	
HIST/LAS	131	Modern Latin America (3.0)	
HIST/LAS	132	History of Mexico (3.0)	
HIST	140	East Asian History (3.0)	
HIST	150	Survey of African History (3.0)	
HIST	160	Middle East from 600 (3.0)	
HIST	220	Women in American History (3.0)	
HIST/LAS	225	Mexican American History (3.0)	
RELS	100	Religions of the Modern World (3.0)	

Total Major Units	19.0-20.0
CSU GE-B or IGETC Pattern	37.0-39.0
Electives (as needed to reach 60 CSU transferable units)	
Total Maximum Units:	60.0