

2011-15 FIVE YEAR CONSTRUCTION PLAN  
(2011-12 FIRST FUNDING YEAR)

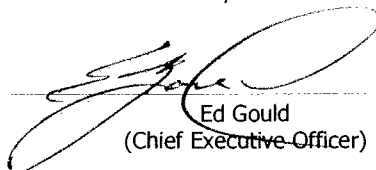
**Imperial Valley CCD**

Prepared in reference to the Community College Construction Act of 1980

and

approved on behalf of the local governing board for submission to  
the office of the Chancellor, California Community Colleges

Signed



Ed Gould  
(Chief Executive Officer)

Title

Superintendent/President

Date

6/30/2009

Contact Person John Lau

Telephone (760) 355-6235

Date Received at  
Chancellor's Office

Chancellor's Office  
reviewed by

Notice of Approval

**EXCERPT OF THE MEETING OF THE  
IMPERIAL COMMUNITY COLLEGE DISTRICT  
BOARD OF TRUSTEES**

**JUNE 17,2009**

**M/S/C Medina/Hart  
Resolution No. 14392: Five-Year Construction Plan**

WHEREAS, in accordance with Section 81820 of the California Education Code, each year community college districts are required to submit a Five-Year Construction Plan to the Chancellor the California Community Colleges; and

WHEREAS, the Five-year Plan communicates to the State Chancellor's Office and other State agencies the anticipated capital outlay needs of the district for the next five years; and

WHEREAS, the Five-year Plan includes information on current enrollment, projected enrollment, and instructional staff. This information, together with actual college space utilization, is analyzed by the Chancellor's Office to develop load-capacity ratios, which are measures of a college's need in certain areas. The load-capacity ratio is one factor that is considered in State

<b>Priority</b>	<b>Project Title</b>	<b>Current Cost</b>	<b>District Share</b>	<b>First Funding Date</b>	<b>Occupy Date</b>
1	SCIENCE STUDY BUILDING	\$32,000,000	\$32,000,000	2004/2005	2009/2010
2	BLDG 400 MODERNIZATION	\$4,808,00	\$2,404,000	2009/2010	2010/2011
3	MODERNIZE ACADEMIC BLDGS	\$12,087,000	\$5,897,000	2010/2011	2012/2013
4	CAREER TECHNICAL BUILDING	\$25,040,000	\$9,524,000	2011/2012	2014/2015
5	TECHNOLOGY BUILDING	\$17,932,000	\$8,959,000	2012/2013	2014/2015
6	LIBRARY REMODEL/ADDITION	\$13,196,000	\$2,639,000	2013/2014	2015/2016
7	GYM – MODERNIZATION	\$2,280,000	\$2,280,000	2014/2015	2016/2017
8	COUNSELING/FIN. AID MODERNIZATION	\$1,715,000	\$1,715,000	2015/2016	2017/2018
9	ADMINISTRATION BUILDING MODERNIZATION	\$1,322,000	\$1,322,000	2015/2016	2017/2018

funding of a capital project; and

WHEREAS, one component to the Five-year Plan is the project priority list for the five-year period. The priority list includes all facility needs of the District based on the Education Master Plan, regardless of whether State funding will be requested. The Project Priority List includes projects that are under way, projects that have been approved by the District for bond or other funding, and projects for which State funding will be requested.

NOW, THEREFORE, BE IT RESOLVED that the Board approves the Project Priority List and approves the submission of the 2011-12 Five Year Construction Plan to the California Community Colleges Chancellor's Office.

I hereby certify that the above is a true and correct copy of a portion of the minutes from the meeting of the Imperial Community College District Board of Trustees.

A handwritten signature in black ink, appearing to read "Ed Gould", written in a cursive style.

---

Ed Gould, Ed.D.  
ICCD Board Secretary

**Inventory of Land**

Imperial Valley CCD

Page 3

List the address and acreage of every land unit owned by the district (Education Code 81821(e)). Please identify all locations, both on-campus and off-campus, grouped according to their "parent" institution. In the event the list is long or complicated, please substitute copies of college bulletins or other notices to the public which display similar information. The list should be current as of October the prior year

Address	Acreage
Imperial Valley College 380 East Aten Road Imperial, CA 92251-0158	160.0
Imperial Valley College Desert Museum Interstate 8 & Boundary Road Ocotillo, CA 92259	23.0

**Legislative Districts**

Campus	Assembly	Senate	House
Imperial Valley College	80	40	51

**Instructional Delivery Locations**

Imperial Valley CCD

Page 4

**Address**

Brawley Extended Campus Center  
104 Magnolia  
Brawley, CA 92227-1583

Calexico Extended Campus Center  
1501 W. Imperial Avenue  
Calexico, CA 92231-1890

El Centro Extended Campus Center  
301 N. Imperial Avenue  
El Centro, CA 92243-2338

Imperial Valley College  
380 East Aten Road  
Imperial, CA 92251-0158

Barbara Worth Country Club  
2050 Country Club Drive  
Holtville, CA 92250

Community Learning Center  
206 "D" Street  
Brawley, CA 92227

Central Union High School  
1001 Brighton Avenue  
El Centro, CA 92243

Southwest High School  
351 Ross Avenue  
El Centro, CA 92243

Valley Community School  
253 East Ross  
El Centro, CA 92243

Calexico High School  
1030 Encinas Avenue  
Calexico, CA 92231

Calipatria High School  
501 W. Main Street  
Calexico, CA 92233

Calipatria State Prison  
7018 Blair Road  
Calexico, CA 92233

San Pascual Valley High School  
676 Baseline Road  
Winterhaven, CA 92283

**Instructional Delivery Locations**

Imperial Valley CCD

---

---

**Address**

---

IVC Pioneer Museum  
373 E. Aten Road  
Imperial, CA 92251

Imperial Irrigation District, Employee Training Ctr  
333 E. Barioni Boulevard  
Imperial, CA 92251

**District Projects Priority Order**

Imperial Valley CCD

No.	Project	Occupancy	Source	Schedule of Funds								
				2009/2010	2010/2011	2011/2012	2012/2013	2013/2014	2014/2015	2015/2016		
1	SCIENCE STUDY BUILDING 45,341	2009/2010 \$32,000,000	NonState									
2	BLDG 400 MODERNIZATION -11,070	2011/2012 \$2,404,000	State NonState			(P)(W) \$209,000	(C)(E) \$2,195,000					
3	MODERNIZE ACADEMIC BLDGS 576	2012/2013 \$6,190,000	State NonState			(P)(W) \$515,000	(C)(E) \$5,675,000					
4	CAREER TECHNICAL BUILDING 33,021	2014/2015 \$12,774,000	State NonState				(P)(W) \$254,000	(C)(E) \$12,520,000				
5	TECHNOLOGY BUILDING 26,555	2014/2015 \$8,973,000	State NonState				(P)(W) \$466,000	(C)(E) \$8,507,000				
6	LIBRARY REMODEL/ADDITION 5,504	2015/2016 \$10,557,000	State NonState					(P)(W) \$758,000	(C)(E) \$9,799,000			
7	BLDG 7 - GYM - MODERNIZATION 2016/2017	\$2,280,000	NonState						(P)(W) \$280,000	(C)(E) \$2,000,000		
8	BLDG 10 - COUNSELING/FIN. AID MO 2017/2018	\$1,715,000	NonState								(P)(W) \$95,000	
9	BLDG 1 - ADMINISTRATION MODERNI 2017/2018	\$1,322,000	NonState								(P)(W) \$100,000	

**District Lecture Capacity/Load Ratios**  
Imperial Valley CCD

No.	Project			2010/2011	2011/2012	2012/2013	2013/2014	2014/2015	2015/2016	2016/2017
1	SCIENCE STUDY BUILDING 6,753    14,277    2009/2010 Imperial Valley College	Lect ASF	WSCH	Occupancy						
2	BLDG 400 MODERNIZATION -2,383    -5,038    2011/2012 Imperial Valley College				78,985 97%					
3	MODERNIZE ACADEMIC BLDGS 1,458    3,082    2012/2013 Imperial Valley College					82,068 97%				
4	CAREER TECHNICAL BUILDING 3,268    6,909    2014/2015 Imperial Valley College							88,977 99%		
5	TECHNOLOGY BUILDING 6,000    12,685    2014/2015 Imperial Valley College							101,662 113%		

		2010/2011	2011/2012	2012/2013	2013/2014	2014/2015	2015/2016	2016/2017
Lecture	Actual*/Projected WSCH	77,900	81,090	84,288	87,255	90,165	93,049	95,776
32,990	Cumulative Capacity	69,746	84,023	78,985	82,068	82,068	101,662	101,662
	Capacity/Load Ratio	90%	104%	94%	94%	91%	109%	106%



**District Laboratory Capacity/Load Ratios**

Imperial Valley CCD

No.	Project	2010/2011	2011/2012	2012/2013	2013/2014	2014/2015	2015/2016	2016/2017
1	SCIENCE STUDY BUILDING 16,643      6,891      2009/2010 Imperial Valley College							
3	MODERNIZE ACADEMIC BLDGS 1,060      -29      2012/2013 Imperial Valley College			19,128 61%				
4	CAREER TECHNICAL BUILDING 27,162      5,284      2014/2015 Imperial Valley College					24,413 73%		
5	TECHNOLOGY BUILDING 13,000      5,058      2014/2015 Imperial Valley College					29,471 88%		

		2010/2011	2011/2012	2012/2013	2013/2014	2014/2015	2015/2016	2016/2017
Laboratory	Actual*/Projected WSCH	29,394	30,438	31,427	32,487	33,571	34,595	35,609
33,836	Cumulative Capacity	12,266	19,157	19,157	19,128	19,128	29,471	29,471
	Capacity/Load Ratio	42%	63%	61%	59%	57%	85%	83%

**District Office Capacity/Load Ratios**

Imperial Valley CCD

No.	Project			2010/2011	2011/2012	2012/2013	2013/2014	2014/2015	2015/2016	2016/2017
1	SCIENCE STUDY BUILDING 7,164      51      2009/2010 Imperial Valley College	Off ASF	FTE							
2	BLDG 400 MODERNIZATION 264      2      2011/2012 Imperial Valley College				289 94%					
3	MODERNIZE ACADEMIC BLDGS -1,478      -11      2012/2013 Imperial Valley College					278 89%				
4	CAREER TECHNICAL BUILDING 1,313      9      2014/2015 Imperial Valley College							288 89%		
5	TECHNOLOGY BUILDING 3,000      21      2014/2015 Imperial Valley College							309 95%		
6	LIBRARY REMODEL/ADDITION -226      -2      2015/2016 Imperial Valley College								307 93%	
7	BLDG 7 - GYM - MODERNIZATION 0      0      2016/2017 Imperial Valley College									307 91%
8	BLDG 10 - COUNSELING/FIN. AID MODERNIZATION 0      0      2017/2018 Imperial Valley College									
9	BLDG 1 - ADMINISTRATION MODERNIZATION 0      0      2017/2018 Imperial Valley College									

		2010/2011	2011/2012	2012/2013	2013/2014	2014/2015	2015/2016	2016/2017
Office	Actual*/Projected FTE	301	307	313	319	324	331	338
33,006	Cumulative Capacity	236	287	289	278	278	309	307
	Capacity/Load Ratio	78%	93%	92%	87%	86%	93%	91%

**District Library Capacity/Load Ratios**

Imperial Valley CCD

No.	Project	Lib ASF	Occupancy	2010/2011	2011/2012	2012/2013	2013/2014	2014/2015	2015/2016	2016/2017
1	SCIENCE STUDY BUILDING 206 2009/2010 Imperial Valley College									
4	CAREER TECHNICAL BUILDING 222 2014/2015 Imperial Valley College							25,331 73%		
5	TECHNOLOGY BUILDING 855 2014/2015 Imperial Valley College							26,186 76%		
6	LIBRARY REMODEL/ADDITION 1,984 2015/2016 Imperial Valley College								28,170 79%	

		2010/2011	2011/2012	2012/2013	2013/2014	2014/2015	2015/2016	2016/2017
Library	Actual*/Projected ASF	30,994	31,954	32,879	33,767	34,652	35,496	36,275
24,903	Cumulative Capacity	24,903	25,109	25,109	25,109	25,109	26,186	28,170
	Capacity/Load Ratio	80%	79%	76%	74%	72%	74%	78%

**District AV/TV Capacity/Load Ratios**

Imperial Valley CCD

No.	Project	AVTV ASF	Occupancy	2010/2011	2011/2012	2012/2013	2013/2014	2014/2015	2015/2016	2016/2017
2	BLDG 400 MODERNIZATION	889	2011/2012		2,610					
	Imperial Valley College				22%					
3	MODERNIZE ACADEMIC BLDGS	293	2012/2013			2,903				
	Imperial Valley College					24%				
6	LIBRARY REMODEL/ADDITION	3,655	2015/2016						6,558	
	Imperial Valley College								53%	

		2010/2011	2011/2012	2012/2013	2013/2014	2014/2015	2015/2016	2016/2017
AV/TV	Actual*/Projected ASF	11,476	11,688	11,893	12,089	12,285	12,472	12,555
1,721	Cumulative Capacity	1,721	1,721	2,610	2,903	2,903	2,903	6,558
	Capacity/Load Ratio	15%	15%	22%	24%	24%	23%	52%

**Load Distribution and Staff Forecast**

Imperial Valley CCD

**District Load Distribution**

Reference: Chancellor's Office Forecast

	Instructional Staff FTE	Total Campus WSCH	Off-Campus WSCH	On-Campus WSCH	P.E. Laboratory WSCH	On-Campus Lecture WSCH	On-Campus Laboratory WSCH
<b>Actual Fall</b>							
2007	283	105,661	3,170	102,491	4,274	71,293	26,924
2008	289	105,661	3,064	102,597	4,206	71,305	27,086
<b>Forecast</b>							
2009	296	110,329	3,089	107,240	4,397	74,532	28,311
2010	301	114,866	3,101	111,765	4,471	77,900	29,394
2011	307	119,276	3,101	116,175	4,647	81,090	30,438
2012	313	123,562	3,151	120,411	4,696	84,288	31,427
2013	319	127,664	3,192	124,472	4,730	87,255	32,487
2014	324	131,786	3,163	128,623	4,888	90,165	33,571
2015	331	135,738	3,190	132,548	4,904	93,049	34,595

**Load Distribution and Staff Forecast**

Imperial Valley CCD

**Instructional Load by Campus or Location**

Reference: Chancellor's Office Forecast

WSCH Distributed to Campuses or Other Locations

Campus	Actual			Projected						
	2006	2007	2008	2009	2010	2011	2012	2013	2014	2015
Imperial Valley College	100,014	105,661	105,661	110,329	114,866	119,276	123,562	127,664	131,786	135,738
<b>Total</b>	<u>100,014</u>	<u>105,661</u>	<u>105,661</u>	<u>110,329</u>	<u>114,866</u>	<u>119,276</u>	<u>123,562</u>	<u>127,664</u>	<u>131,786</u>	<u>135,738</u>

**Load Distribution and Staff Forecast**

Imperial Valley CCD

**Total District Library Load**

Reference: Chancellor's Office Forecast of Day-Graded Enrollment

(a)	Total Day-Graded (b)	Number of Campuses (c)	Initial ASF (3,795/Camp) (d)	First 3,000 Day Graded (3.83/DG) (e)	Between 3k - 9k (3.39/DG) (f)	Above 9,000 (2.94/DG) (g)	Total ASF (d+e+f+g)
2009/2010	7,352	1	3,795	11,490	14,753		30,038
2010/2011	7,634	1	3,795	11,490	15,709		30,994
2011/2012	7,917	1	3,795	11,490	16,669		31,954
2012/2013	8,190	1	3,795	11,490	17,594		32,879
2013/2014	8,452	1	3,795	11,490	18,482		33,767
2014/2015	8,713	1	3,795	11,490	19,367		34,652
2015/2016	8,962	1	3,795	11,490	20,211		35,496

**Load Distribution and Staff Forecast**

Imperial Valley CCD

**Library Load by Campus or Location**

Reference: Chancellor's Office Forecast of Day-Graded Enrollment

Campus	2009	2010	2011	2012	2013	2014	2015
Imperial Valley College	30,038 (100%)	30,994 (100%)	31,954 (100%)	32,879 (100%)	33,767 (100%)	34,652 (100%)	35,496 (100%)
<b>Total</b>	<u>30,038</u>	<u>30,994</u>	<u>31,954</u>	<u>32,879</u>	<u>33,767</u>	<u>34,652</u>	<u>35,496</u>



**Load Distribution and Staff Forecast**

Imperial Valley CCD

**Total District AV, Radio, TV Load**

Reference: Chancellor's Office Forecast of Day-Graded Enrollment

(a)	Total Day-Graded (b)	Number of Campuses (c)	Initial ASF (3,500/Camp) (d)	First 3,000 Day Graded (1.50/DG) (e)	Between 3k - 9k (0.75/DG) (f)	Above 9,000 (0.25/DG) (g)	Total ASF (d+e+f+g)
2009/2010	7,352	1	3,500	4,500	3,264		11,264
2010/2011	7,634	1	3,500	4,500	3,476		11,476
2011/2012	7,917	1	3,500	4,500	3,688		11,688
2012/2013	8,190	1	3,500	4,500	3,893		11,893
2013/2014	8,452	1	3,500	4,500	4,089		12,089
2014/2015	8,713	1	3,500	4,500	4,285		12,285
2015/2016	8,962	1	3,500	4,500	4,472		12,472

**Load Distribution and Staff Forecast**

Imperial Valley CCD

**AV, Radio, TV Load by Campus or Location**

Reference: Chancellor's Office Forecast of Day-Graded Enrollment

Campus	2009	2010	2011	2012	2013	2014	2015
Imperial Valley College	11,264 (100%)	11,476 (100%)	11,688 (100%)	11,893 (100%)	12,089 (100%)	12,285 (100%)	12,472 (100%)
<b>Total</b>	<u>11,264</u>	<u>11,476</u>	<u>11,688</u>	<u>11,893</u>	<u>12,089</u>	<u>12,285</u>	<u>12,472</u>



**Campus Lecture Capacity/Load Ratios**

Imperial Valley College

No.	Project			2010/2011	2011/2012	2012/2013	2013/2014	2014/2015	2015/2016	2016/2017
1	SCIENCE STUDY BUILDING 6,753    14,277    2009/2010 Imperial Valley College	Lect ASF	WSCH	Occupancy						
2	BLDG 400 MODERNIZATION -2,383    -5,038    2011/2012 Imperial Valley College				78,985 97%					
3	MODERNIZE ACADEMIC BLDGS 1,458    3,082    2012/2013 Imperial Valley College					82,068 97%				
4	CAREER TECHNICAL BUILDING 3,268    6,909    2014/2015 Imperial Valley College							88,977 99%		
5	TECHNOLOGY BUILDING 6,000    12,685    2014/2015 Imperial Valley College							101,662 113%		

		2010/2011	2011/2012	2012/2013	2013/2014	2014/2015	2015/2016	2016/2017
Lecture	Actual*/Projected WSCH	77,900	81,090	84,288	87,255	90,165	93,049	95,776
32,990	Cumulative Capacity	69,746	84,023	78,985	82,068	82,068	101,662	101,662
	Capacity/Load Ratio	90%	104%	94%	94%	91%	109%	106%

**Campus Laboratory Capacity/Load Ratios**

Imperial Valley College

No.	Project			2010/2011	2011/2012	2012/2013	2013/2014	2014/2015	2015/2016	2016/2017
1	SCIENCE STUDY BUILDING 16,643      6,891      2009/2010 Imperial Valley College	Lab ASF	WSCH	Occupancy						
3	MODERNIZE ACADEMIC BLDGS 1,060      -29      2012/2013 Imperial Valley College					19,128				
						61%				
4	CAREER TECHNICAL BUILDING 27,162      5,284      2014/2015 Imperial Valley College							24,413		
								73%		
5	TECHNOLOGY BUILDING 13,000      5,058      2014/2015 Imperial Valley College							29,471		
								88%		

			2010/2011	2011/2012	2012/2013	2013/2014	2014/2015	2015/2016	2016/2017
Laboratory	Actual*/Projected WSCH		29,394	30,438	31,427	32,487	33,571	34,595	35,609
33,836	Cumulative Capacity		12,266	19,157	19,157	19,128	19,128	29,471	29,471
	Capacity/Load Ratio		42%	63%	61%	59%	57%	85%	83%

**Campus Office Capacity/Load Ratios**

Imperial Valley College

No.	Project	Off ASF	FTE	Occupancy	2010/2011	2011/2012	2012/2013	2013/2014	2014/2015	2015/2016	2016/2017
1	SCIENCE STUDY BUILDING 7,164 51 2009/2010 Imperial Valley College										
2	BLDG 400 MODERNIZATION 264 2 2011/2012 Imperial Valley College					289					
						94%					
3	MODERNIZE ACADEMIC BLDGS -1,478 -11 2012/2013 Imperial Valley College						278				
							89%				
4	CAREER TECHNICAL BUILDING 1,313 9 2014/2015 Imperial Valley College								288		
									89%		
5	TECHNOLOGY BUILDING 3,000 21 2014/2015 Imperial Valley College								309		
									95%		
6	LIBRARY REMODEL/ADDITION -226 -2 2015/2016 Imperial Valley College									307	
										93%	
7	BLDG 7 - GYM - MODERNIZATION 0 0 2016/2017 Imperial Valley College										307
											91%
8	BLDG 10 - COUNSELING/FIN. AID MODERNIZATION 0 0 2017/2018 Imperial Valley College										
9	BLDG 1 - ADMINISTRATION MODERNIZATION 0 0 2017/2018 Imperial Valley College										

		2010/2011	2011/2012	2012/2013	2013/2014	2014/2015	2015/2016	2016/2017
Office	Actual*/Projected FTE	301	307	313	319	324	331	338
33,006	Cumulative Capacity	236	287	289	278	278	309	307
	Capacity/Load Ratio	78%	93%	92%	87%	86%	93%	91%

**Campus Library Capacity/Load Ratios**

Imperial Valley College

No.	Project	Lib ASF	Occupancy	2010/2011	2011/2012	2012/2013	2013/2014	2014/2015	2015/2016	2016/2017
1	SCIENCE STUDY BUILDING 206 2009/2010 Imperial Valley College									
4	CAREER TECHNICAL BUILDING 222 2014/2015 Imperial Valley College							25,331 73%		
5	TECHNOLOGY BUILDING 855 2014/2015 Imperial Valley College							26,186 76%		
6	LIBRARY REMODEL/ADDITION 1,984 2015/2016 Imperial Valley College								28,170 79%	

Library	Actual*/Projected ASF	2010/2011	2011/2012	2012/2013	2013/2014	2014/2015	2015/2016	2016/2017
24,903	Cumulative Capacity	30,994	31,954	32,879	33,767	34,652	35,496	36,275
	Capacity/Load Ratio	24,903	25,109	25,109	25,109	25,109	26,186	28,170
		80%	79%	76%	74%	72%	74%	78%

**Campus AV/TV Capacity/Load Ratios**

Imperial Valley College

No.	Project	AVTV ASF	Occupancy	2010/2011	2011/2012	2012/2013	2013/2014	2014/2015	2015/2016	2016/2017
2	BLDG 400 MODERNIZATION	889	2011/2012		2,610					
	Imperial Valley College				22%					
3	MODERNIZE ACADEMIC BLDGS	293	2012/2013			2,903				
	Imperial Valley College					24%				
6	LIBRARY REMODEL/ADDITION	3,655	2015/2016						6,558	
	Imperial Valley College								53%	

		2010/2011	2011/2012	2012/2013	2013/2014	2014/2015	2015/2016	2016/2017
AV/TV	Actual*/Projected ASF	11,476	11,688	11,893	12,089	12,285	12,472	12,555
1,721	Cumulative Capacity	1,721	1,721	2,610	2,903	2,903	2,903	6,558
	Capacity/Load Ratio	15%	15%	22%	24%	24%	23%	52%



**Load Distribution and Staff Forecast**

Imperial Valley College

**Campus Load Distribution**

Reference: Chancellor's Office Forecast

	Instructional Staff FTE	Total Campus WSCH	Off-Campus WSCH	On-Campus WSCH	P.E. Laboratory WSCH	On-Campus Lecture WSCH	On-Campus Laboratory WSCH
<b>Actual Fall</b>							
2007	283	105,661	3,170	102,491	4,274	71,293	26,924
2008	289	105,661	3,064	102,597	4,206	71,305	27,086
<b>Forecast</b>							
2009	296	110,329	3,089	107,240	4,397	74,532	28,311
2010	301	114,866	3,101	111,765	4,471	77,900	29,394
2011	307	119,276	3,101	116,175	4,647	81,090	30,438
2012	313	123,562	3,151	120,411	4,696	84,288	31,427
2013	319	127,664	3,192	124,472	4,730	87,255	32,487
2014	324	131,786	3,163	128,623	4,888	90,165	33,571
2015	331	135,738	3,190	132,548	4,904	93,049	34,595

**Load Distribution and Staff Forecast**

Imperial Valley College

**Campus Worksheet for Computing FTE Instruction Staff**

College Instructional Staff, Fall Term. Included are all certificated staff for day, extended day, and adult education except those whose office is located off-campus.

(a)	Total Certificated Instructional and Statutory Staff FTE (b)	Non-Instructional Portion of FTE (c)	Net Total Instructional and Statutory Staff FTE (b-c) (d)
<b>Instructors</b>	260.0		260.0
<b>Counselors</b> Include certificated special program coordinators, economic opportunity program, coordinators, statutory and Title 5 required staff, et. al.	33.0		33.0
<b>Department Administrators</b>			
<b>Librarians</b> Include certificated director of audio/visual, et. al.	3.0		3.0
<b>Institutional Administrators</b> Include certificated persons with responsibilities covering the entire institution, such as Superintendent, Assistant Superintendent, President, Dean of Instruction, Director of Data Processing, et. al.	10.0	10.0	
<b>Fall 2009 Totals</b>	306.0	10.0	296.0

Column (b) is the total number of Column (a) distributed to categories

Column (c) is the fraction of time expressed as Full-Time Equivalents devoted to noninstructional work.

Counselors, department administrators, and statutorily required staff are counted as if they had no noninstructional duties.

**Load Distribution and Staff Forecast**

Imperial Valley College

**Campus Worksheet for Computing FTE Instruction Staff**

College Instructional Staff, Fall Term. Included are all certificated staff for day, extended day, and adult education except those whose office is located off-campus.

(a)	Total Certificated Instructional and Statutory Staff FTE (b)	Non-Instructional Portion of FTE (c)	Net Total Instructional and Statutory Staff FTE (b-c) (d)
<b>Instructors</b>	265.0		265.0
<b>Counselors</b> Include certificated special program coordinators, economic opportunity program, coordinators, statutory and Title 5 required staff, et. al.	33.0		33.0
<b>Department Administrators</b>			
<b>Librarians</b> Include certificated director of audio/visual, et. al.	3.0		3.0
<b>Institutional Administrators</b> Include certificated persons with responsibilities covering the entire institution, such as Superintendent, Assistant Superintendent, President, Dean of Instruction, Director of Data Processing, et. al.	10.0	10.0	
<b>Fall 2010 Totals</b>	311.0	10.0	301.0

Column (b) is the total number of Column (a) distributed to categories

Column (c) is the fraction of time expressed as Full-Time Equivalents devoted to noninstructional work.

Counselors, department administrators, and statutorily required staff are counted as if they had no noninstructional duties.

**Load Distribution and Staff Forecast**

Imperial Valley College

**Campus Worksheet for Computing FTE Instruction Staff**

College Instructional Staff, Fall Term. Included are all certificated staff for day, extended day, and adult education except those whose office is located off-campus.

(a)	Total Certificated Instructional and Statutory Staff FTE (b)	Non-Instructional Portion of FTE (c)	Net Total Instructional and Statutory Staff FTE (b-c) (d)
<b>Instructors</b>	270.0		270.0
<b>Counselors</b> Include certificated special program coordinators, economic opportunity program, coordinators, statutory and Title 5 required staff, et. al.	34.0		34.0
<b>Department Administrators</b>			
<b>Librarians</b> Include certificated director of audio/visual, et. al.	3.0		3.0
<b>Institutional Administrators</b> Include certificated persons with responsibilities covering the entire institution, such as Superintendent, Assistant Superintendent, President, Dean of Instruction, Director of Data Processing, et. al.	10.0	10.0	
<b>Fall 2011 Totals</b>	317.0	10.0	307.0

Column (b) is the total number of Column (a) distributed to categories

Column (c) is the fraction of time express as Full-Time Equivalents devoted to noninstructional work.

Counselors, department administrators, and statutorily required staff are counted as if they had no noninstructional duties.

**Load Distribution and Staff Forecast**

Imperial Valley College

**Campus Worksheet for Computing FTE Instruction Staff**

College Instructional Staff, Fall Term. Included are all certificated staff for day, extended day, and adult education except those whose office is located off-campus.

(a)	Total Certificated Instructional and Statutory Staff FTE (b)	Non-Instructional Portion of FTE (c)	Net Total Instructional and Statutory Staff FTE (b-c) (d)
<b>Instructors</b>	276.0		276.0
<b>Counselors</b> Include certificated special program coordinators, economic opportunity program, coordinators, statutory and Title 5 required staff, et. al.	34.0		34.0
<b>Department Administrators</b>			
<b>Librarians</b> Include certificated director of audio/visual, et. al.	3.0		3.0
<b>Institutional Administrators</b> Include certificated persons with responsibilities covering the entire institution, such as Superintendent, Assistant Superintendent, President, Dean of Instruction, Director of Data Processing, et. al.	10.0	10.0	
<b>Fall 2012 Totals</b>	323.0	10.0	313.0

Column (b) is the total number of Column (a) distributed to categories

Column (c) is the fraction of time expressed as Full-Time Equivalents devoted to noninstructional work.

Counselors, department administrators, and statutorily required staff are counted as if they had no noninstructional duties.

**Load Distribution and Staff Forecast**

Imperial Valley College

**Campus Worksheet for Computing FTE Instruction Staff**

College Instructional Staff, Fall Term. Included are all certificated staff for day, extended day, and adult education except those whose office is located off-campus.

(a)	Total Certificated Instructional and Statutory Staff FTE (b)	Non-Instructional Portion of FTE (c)	Net Total Instructional and Statutory Staff FTE (b-c) (d)
<b>Instructors</b>	282.0		282.0
<b>Counselors</b> Include certificated special program coordinators, economic opportunity program, coordinators, statutory and Title 5 required staff, et. al.	34.0		34.0
<b>Department Administrators</b>			
<b>Librarians</b> Include certificated director of audio/visual, et. al.	3.0		3.0
<b>Institutional Administrators</b> Include certificated persons with responsibilities covering the entire institution, such as Superintendent, Assistant Superintendent, President, Dean of Instruction, Director of Data Processing, et. al.	10.0	10.0	
<b>Fall 2013 Totals</b>	329.0	10.0	319.0

Column (b) is the total number of Column (a) distributed to categories

Column (c) is the fraction of time expressed as Full-Time Equivalents devoted to noninstructional work.

Counselors, department administrators, and statutorily required staff are counted as if they had no noninstructional duties.

**Load Distribution and Staff Forecast**

Imperial Valley College

**Campus Worksheet for Computing FTE Instruction Staff**

College Instructional Staff, Fall Term. Included are all certificated staff for day, extended day, and adult education except those whose office is located off-campus.

(a)	Total Certificated Instructional and Statutory Staff FTE (b)	Non-Instructional Portion of FTE (c)	Net Total Instructional and Statutory Staff FTE (b-c) (d)
<b>Instructors</b>	286.0		286.0
<b>Counselors</b> Include certificated special program coordinators, economic opportunity program, coordinators, statutory and Title 5 required staff, et. al.	35.0		35.0
<b>Department Administrators</b>			
<b>Librarians</b> Include certificated director of audio/visual, et. al.	3.0		3.0
<b>Institutional Administrators</b> Include certificated persons with responsibilities covering the entire institution, such as Superintendent, Assistant Superintendent, President, Dean of Instruction, Director of Data Processing, et. al.	10.0	10.0	
<b>Fall 2014 Totals</b>	334.0	10.0	324.0

Column (b) is the total number of Column (a) distributed to categories

Column (c) is the fraction of time expressed as Full-Time Equivalents devoted to noninstructional work.

Counselors, department administrators, and statutorily required staff are counted as if they had no noninstructional duties.

**Load Distribution and Staff Forecast**

Imperial Valley College

**Campus Worksheet for Computing FTE Instruction Staff**

College Instructional Staff, Fall Term. Included are all certificated staff for day, extended day, and adult education except those whose office is located off-campus.

(a)	Total Certificated Instructional and Statutory Staff FTE (b)	Non-Instructional Portion of FTE (c)	Net Total Instructional and Statutory Staff FTE (b-c) (d)
<b>Instructors</b>	293.0		293.0
<b>Counselors</b> Include certificated special program coordinators, economic opportunity program, coordinators, statutory and Title 5 required staff, et. al.	35.0		35.0
<b>Department Administrators</b>			
<b>Librarians</b> Include certificated director of audio/visual, et. al.	3.0		3.0
<b>Institutional Administrators</b> Include certificated persons with responsibilities covering the entire institution, such as Superintendent, Assistant Superintendent, President, Dean of Instruction, Director of Data Processing, et. al.	10.0	10.0	
<b>Fall 2015 Totals</b>	341.0	10.0	331.0

Column (b) is the total number of Column (a) distributed to categories

Column (c) is the fraction of time expressed as Full-Time Equivalents devoted to noninstructional work.

Counselors, department administrators, and statutorily required staff are counted as if they had no noninstructional duties.



**Cum Sum of Existing and Proposed Space, 2010 - 2016**

Imperial Valley College

**Cumulative Summary of Existing and Proposed Areas, 2010-2016**

Priority and Year of Occupancy (a)	Classroom 100's (b)	Laboratory 200's (c)	Office 300's (d)	Library 400's (e)	AV Radio TV 530 - 535 (f)	P.E. 520 - 525 (g)	Assembly 610 - 625 (h)	Inactive 050 - 070 (i)	All Other Areas (j)	Total ASF (k)
Total ASF	32,990	33,836	33,006	24,903	1,721	30,291	2,231		42,213	201,191
1 2009/2010 SCIENCE STUDY BUILDING	6,753	16,643	7,164	206					14,575	45,341
	39,743	50,479	40,170	25,109					56,788	246,532
2 2011/2012 BLDG 400 MODERNIZATION	-2,383		264		889				-9,840	-11,070
	37,360		40,434		2,610				46,948	235,462
3 2012/2013 MODERNIZE ACADEMIC BLDGS	1,458	1,060	-1,478		293				-757	576
	38,818	51,539	38,956		2,903				46,191	236,038
4 2014/2015 CAREER TECHNICAL BUILDING	3,268	27,162	1,313	222					1,056	33,021
	42,086	78,701	40,269	25,331					47,247	269,059
5 2014/2015 TECHNOLOGY BUILDING	6,000	13,000	3,000	855					3,700	26,555
	48,086	91,701	43,269	26,186					50,947	295,614
6 2015/2016 LIBRARY REMODEL/ADDITION			-226	1,984	3,655				91	5,504
			43,043	28,170	6,558				51,038	301,118
<b>Total Existing and Proposed Space</b>	48,086	91,701	43,043	28,170	6,558	30,291	2,231		51,038	301,118

**Capacity of Net Existing On-Campus ASF**

Imperial Valley College

**Classrooms, Classroom Service (Room Type 100's)**

	Net ASF	ASF/100 WSCH	Capacity WSCH
Totals . . . . .	32,990	47.3	69,746

**Laboratories and Laboratory Service Areas (Room Types 210, 215, 220, 225, 230, 235, 255)**

TOP Code/Description	Net ASF	ASF/100 WSCH	Capacity WSCH	TOP Code/Description	Net ASF	ASF/100 WSCH	Capacity WSCH
0100 Agriculture and Natural Resources		492		0956 Manufacturing and Industrial Technology	1,911	385	496
0116 Agricultural Power Equipment Technology		856		1000 Fine and Applied Arts	4,755	257	1,850
0200 Architecture and Related Technologies		257		1100 Foreign Language		150	
0300 Environmental Sciences and Technologies		235		1200 Health	2,961	214	1,384
0400 Biological Sciences	3,785	235	1,611	1300 Family and Consumer Sciences		257	
0500 Business and Management		128		1400 Law		150	
0600 Media and Communications	106	214	50	1500 Humanities (Letters)		150	
0700 Information Technology	2,252	171	1,317	1600 Library Science		150	
0800 Education		321		1700 Mathematics	1,340	150	893
0900 Engineering & Industrial Technologies	2,081	321	648	1800 Military Studies		214	
0945 Industrial Systems Technology and Mainte		556		1900 Physical Sciences	2,809	257	1,093
0946 Environmental Control Technology (HVAC)		556		2000 Psychology		150	
0947 Diesel Technology		856		2100 Public and Protective Services	12	214	6
0948 Automotive Technology	6,179	856	722	2200 Social Sciences		150	
0949 Automotive Collison Repair		856		3000 Commercial Services		214	
0950 Aeronautical and Aviation Technology		749		4900 Interdisciplinary Studies	5,645	257	2,196
0952 Construction Crafts Technology		749					
Totals . . . . .					33,836		12,266
Campus Avg Lab ASF/100 WSCH						276	

**Office and Office Service Areas (Room Type 300's)**

	Net ASF	ASF per FTE	Capacity FTE
Totals . . . . .	33,006	140	236

**Project Intent And Scope**

Imperial Valley College

District Priority : **1 SCIENCE STUDY BUILDING**

Project Type :  Site Acquisition  New Construction  Reconstruction  
 Replacement  Infrastructure  Equipment

Total Estimated Costs : \$32,000,000

Anticipated Source(s) of Funds : Non-State

Type of construction :

Seismic Retrofit :

If Existing - Age :

If Existing - Condition :

**Anticipated Time Schedule**

	Land Acquisition	Preliminary Plans	Working Drawing	Construction	Equipment	Occupancy
Year		2004/2005	2006/2007	2007/2008	2008/2009	2009/2010
Estimated Cost		\$680,000	\$798,000	\$29,020,000	\$1,502,000	

**Explain why this project is needed:**

Currently Chemistry, Physics, and Biology courses are taught in limited facilities that were constructed in 1961. This project constructs a new science facility to meet the pedagogic needs of the faculty in delivering a meaningful program. This need was recognized by the community and is a listed in project in the local bond issue. The project also results in the removal of two portables. Bldgs 2500 and 2800 are removed and Bldg 400 is vacated. Construction Costs are calculated on the basis of 120% of the 2005 State Bldg Unit Costs to reflect rising material costs and the local construction factor.

**Project Intent And Scope**

Imperial Valley College

District Priority No.: **1 SCIENCE STUDY BUILDING**

**Outline of Project Space - Buildings and Remodelings**

	Classroom Type 100's	Laboratory 210 - 255	Office Type 300's	Library Type 400's	AV - TV 530 - 535	All Other	Total ASF
Project Primary	7,999	23,237	8,561	687		7,074	47,558
Project Secondary	-1,246	-6,594	-1,397	-481		7,501	-2,217
Project Net ASF	6,753	16,643	7,164	206		14,575	45,341

**Project Net Capacity**

Classrooms, Classroom Service (Room Type 100's)	Net ASF	ASF/100 WSCH	Capacity WSCH
<b>Classroom Totals . . . . .</b>	<b>6,753</b>	47.3	<b>14,277</b>

**Laboratories and Laboratory Service Areas (Room Types 210, 215, 220, 225, 230, 235, 255)**

Primary Effect				Secondary Effect			
TOP Code/Description	Net ASF	ASF/100 WSCH	Capacity WSCH	TOP Code/Description	Net ASF	ASF/100 WSCH	Capacity WSCH
0400 Biological Sciences	15,189	235	6,463	0400 Biological Sciences	-3,785	235	-1,611
1900 Physical Sciences	8,048	257	3,132	1900 Physical Sciences	-2,809	257	-1,093
				<b>Laboratory Totals . . . . .</b>	<b>16,643</b>		<b>6,891</b>

Office and Office Service Areas (Room Type 300's)	Net ASF	ASF per FTE	Capacity FTE
<b>Office Totals . . . . .</b>	<b>7,164</b>	140	<b>51.17</b>

**Project Intent And Scope**

Imperial Valley College

District Priority : **2 BLDG 400 MODERNIZATION**

Project Type :  Site Acquisition  New Construction  Reconstruction  
 Replacement  Infrastructure  Equipment

Total Estimated Costs : \$4,808,000

Anticipated Source(s) of Funds : State and Non-State

Type of construction :

Seismic Retrofit :

If Existing - Age :

If Existing - Condition :

**Anticipated Time Schedule**

	Land Acquisition	Preliminary Plans	Working Drawing	Construction	Equipment	Occupancy
Year		2009/2010	2009/2010	2010/2011	2010/2011	2011/2012
Estimated Cost		\$196,000	\$221,000	\$4,391,000	\$0	

**Explain why this project is needed:**

The current Science Building - Bldg 400 (space inventory #004) contains out of date laboratory facilities; the District is constructing a new science building with local funds to provide for replacement and growth. At the completion of the new building, Bldg 4 will be vacant (unassigned room type 050). This project activates that space by remodeling the building for instructional uses. The project also results in the permanent removal of 11,070 ASF (temporary modular building 20 and building 5 - 500A. building 50 - 500B).

The resulting project provides for 8 classrooms, 5 offices, 2 distance learning rooms, and clinical assessment spaces (room type 540) and a meeting room.

District Priority No.: **2 BLDG 400 MODERNIZATION**

**Outline of Project Space - Buildings and Remodelings**

	Classroom Type 100's	Laboratory 210 - 255	Office Type 300's	Library Type 400's	AV - TV 530 - 535	All Other	Total ASF
Project Primary	4,417		463		889	2,552	8,321
Project Secondary	-6,800		-199			-12,392	-19,391
Project Net ASF	-2,383		264		889	-9,840	-11,070

**Project Net Capacity**

	Net ASF	ASF/100 WSCH	Capacity WSCH
Classrooms, Classroom Service (Room Type 100's)			
<b>Classroom Totals . . . . .</b>	<b>-2,383</b>	<b>47.3</b>	<b>-5,038</b>

**Laboratories and Laboratory Service Areas (Room Types 210, 215, 220, 225, 230, 235, 255)**

Primary Effect				Secondary Effect			
TOP Code/Description	Net ASF	ASF/100 WSCH	Capacity WSCH	TOP Code/Description	Net ASF	ASF/100 WSCH	Capacity WSCH
				<b>Laboratory Totals . . . . .</b>	<b>0</b>		<b>0</b>

	Net ASF	ASF per FTE	Capacity FTE
Office and Office Service Areas (Room Type 300's)			
<b>Office Totals . . . . .</b>	<b>264</b>	<b>140</b>	<b>1.89</b>

**Project Intent And Scope**

Imperial Valley College

District Priority : **3 MODERNIZE ACADEMIC BLDGS**

Project Type :  Site Acquisition  New Construction  Reconstruction  
 Replacement  Infrastructure  Equipment

Total Estimated Costs : \$12,087,000

Anticipated Source(s) of Funds : State and Non-State

Type of construction :

Seismic Retrofit :

If Existing - Age :

If Existing - Condition :

**Anticipated Time Schedule**

	Land Acquisition	Preliminary Plans	Working Drawing	Construction	Equipment	Occupancy
Year		2010/2011	2010/2011	2011/2012	2011/2012	2012/2013
Estimated Cost		\$482,000	\$522,000	\$11,042,000	\$41,000	

**Explain why this project is needed:**

This project modernizes 3 small buildings that constitute the heart of the campus. Two of these building were part of the original campus (1962): Bldg 2 and Bldg 3. Including Bldg 800 (constructed in 1971) these buildings account for 11,976 of lecture space (25,319 WSCH of the campus total capacity of 69,746 WSCH), 5,470 asf of laboratory space, 4,150 asf of office space, and 839 asf of all other space.

In total the project modernizes 22,535 asf/32,286gsf of space by addressing code issues, infrastructure that has outlived its life, program and technology support issues to support the changing in teaching/learning methods that have occurred since the buildings were first constructed. Existing lecture spaces are reconfigured to better fit the class sizes to reduce overall lecture space to provide for the addition of needed laboratory space.

District Priority No.: **3 MODERNIZE ACADEMIC BLDGS**

**Outline of Project Space - Buildings and Remodelings**

	Classroom Type 100's	Laboratory 210 - 255	Office Type 300's	Library Type 400's	AV - TV 530 - 535	All Other	Total ASF
Project Primary	13,434	6,630	2,672		293	82	23,111
Project Secondary	-11,976	-5,570	-4,150			-839	-22,535
Project Net ASF	1,458	1,060	-1,478		293	-757	576

**Project Net Capacity**

Classrooms, Classroom Service (Room Type 100's)	Net ASF	ASF/100 WSCH	Capacity WSCH
<b>Classroom Totals . . . . .</b>	<b>1,458</b>	47.3	<b>3,082</b>

**Laboratories and Laboratory Service Areas (Room Types 210, 215, 220, 225, 230, 235, 255)**

Primary Effect				Secondary Effect			
TOP Code/Description	Net ASF	ASF/100 WSCH	Capacity WSCH	TOP Code/Description	Net ASF	ASF/100 WSCH	Capacity WSCH
1000 Music	3,880	257	1,510	0700 Information Technology	-2,252	171	-1,317
4900 General Studies	2,750	257	1,070	1000 Fine and Applied Arts	-2,220	257	-864
				2100 Public and Protective Services	-12	214	-6
				4900 Interdisciplinary Studies	-1,086	257	-423
				<b>Laboratory Totals . . . . .</b>	<b>1,060</b>		<b>-29</b>

Office and Office Service Areas (Room Type 300's)	Net ASF	ASF per FTE	Capacity FTE
<b>Office Totals . . . . .</b>	<b>-1,478</b>	140	<b>-10.56</b>



**Project Intent And Scope**

Imperial Valley College

District Priority : **4 CAREER TECHNICAL BUILDING**

Project Type :  Site Acquisition  New Construction  Reconstruction  
 Replacement  Infrastructure  Equipment

Total Estimated Costs : \$25,319,000

Anticipated Source(s) of Funds : State and Non-State

Type of construction :

Seismic Retrofit :

If Existing - Age :

If Existing - Condition :

**Anticipated Time Schedule**

	Land Acquisition	Preliminary Plans	Working Drawing	Construction	Equipment	Occupancy
Year		2011/2012	2011/2012	2012/2013	2012/2013	2014/2015
Estimated Cost		\$800,000	\$896,000	\$21,604,000	\$2,019,000	

**Explain why this project is needed:**

This project provides specialized instructional facilities necessary to expand programs in industrial technology and the construction trades. The Imperial Valley is undergoing a transition that is adding good paying jobs in these careers. The 55,000 GSF facility will provide lecture, laboratory, offices and support spaces for HVAC, masonry, electrical, plumbing, welding, autocad and carpentry and automotive.

While the project is anticipated to be primarily new construction, a portion of it will be reconstruction of existing facilities, Building 11, 12 and 13.

District Priority No.: **4 CAREER TECHNICAL BUILDING**

**Outline of Project Space - Buildings and Remodelings**

	Classroom Type 100's	Laboratory 210 - 255	Office Type 300's	Library Type 400's	AV - TV 530 - 535	All Other	Total ASF
Project Primary	3,268	38,537	2,078	222		1,056	45,161
Project Secondary		-11,375	-765				-12,140
Project Net ASF	3,268	27,162	1,313	222		1,056	33,021

**Project Net Capacity**

	Net ASF	ASF/100 WSCH	Capacity WSCH
Classrooms, Classroom Service (Room Type 100's)			
<b>Classroom Totals . . . . .</b>	<b>3,268</b>	<b>47.3</b>	<b>6,909</b>

**Laboratories and Laboratory Service Areas (Room Types 210, 215, 220, 225, 230, 235, 255)**

Primary Effect				Secondary Effect			
TOP Code/Description	Net ASF	ASF/100 WSCH	Capacity WSCH	TOP Code/Description	Net ASF	ASF/100 WSCH	Capacity WSCH
0900 Drafting Technology	1,352	321	421	0600 Journalism	-106	214	-50
0900 Electronics and Electric Technology	3,706	321	1,155	0900 Electronics and Electric Technology	-2,081	321	-648
0946 Environmental Control Technology (HV)	2,360	556	424				
0948 Automotive Technology	11,883	856	1,388	0948 Automotive Technology	-4,742	856	-554
0949 Automotive Collision Repair	2,003	856	234				
0952 Construction Crafts Technology	9,490	749	1,267				
0956 Manufacturing and Industrial Technolo	2,354	385	611	0956 Manufacturing and Industrial Technolo	-1,911	385	-496
				1000 Art (Painting, Drawing and Sculpture)	-2,535	257	-986
2100 Public and Protective Services	5,389	214	2,518				
				<b>Laboratory Totals . . . . .</b>	<b>27,162</b>		<b>5,284</b>

	Net ASF	ASF per FTE	Capacity FTE
Office and Office Service Areas (Room Type 300's)			
<b>Office Totals . . . . .</b>	<b>1,313</b>	<b>140</b>	<b>9.38</b>

**Project Intent And Scope**

Imperial Valley College

District Priority : **5 TECHNOLOGY BUILDING**

Project Type :     Site Acquisition                       New Construction                       Reconstruction  
                                   Replacement                                       Infrastructure                                       Equipment

Total Estimated Costs : \$17,932,000

Anticipated Source(s) of Funds : State and Non-State

Type of construction :

Seismic Retrofit :

If Existing - Age :

If Existing - Condition :

**Anticipated Time Schedule**

	Land Acquisition	Preliminary Plans	Working Drawing	Construction	Equipment	Occupancy
Year		2012/2013	2012/2013	2013/2014	2013/2014	2014/2015
Estimated Cost		\$530,000	\$576,000	\$13,747,000	\$3,079,000	

**Explain why this project is needed:**

This project provides a 46,950 GSF building consolidating computer labs for interdisciplinary use. The college's main computer center along with a number of computer labs, classrooms and offices make up the assignable square footage in this building. It also contains breakout rooms where small study groups can convene.

District Priority No.: **5 TECHNOLOGY BUILDING**

**Outline of Project Space - Buildings and Remodelings**

	Classroom Type 100's	Laboratory 210 - 255	Office Type 300's	Library Type 400's	AV - TV 530 - 535	All Other	Total ASF
Project Primary	6,000	13,000	3,000	855		3,700	26,555
Project Secondary							
Project Net ASF	6,000	13,000	3,000	855		3,700	26,555

**Project Net Capacity**

	Net ASF	ASF/100 WSCH	Capacity WSCH
Classrooms, Classroom Service (Room Type 100's)			
<b>Classroom Totals . . . . .</b>	<b>6,000</b>	<b>47.3</b>	<b>12,685</b>

**Laboratories and Laboratory Service Areas (Room Types 210, 215, 220, 225, 230, 235, 255)**

Primary Effect				Secondary Effect			
TOP Code/Description	Net ASF	ASF/100 WSCH	Capacity WSCH	TOP Code/Description	Net ASF	ASF/100 WSCH	Capacity WSCH
4900 General Studies	13,000	257	5,058				
<b>Laboratory Totals . . . . .</b>	<b>13,000</b>		<b>5,058</b>				

	Net ASF	ASF per FTE	Capacity FTE
Office and Office Service Areas (Room Type 300's)			
<b>Office Totals . . . . .</b>	<b>3,000</b>	<b>140</b>	<b>21.43</b>

**Project Intent And Scope**

Imperial Valley College

District Priority : **6 LIBRARY REMODEL/ADDITION**

Project Type :     Site Acquisition                       New Construction                       Reconstruction  
                                   Replacement                                       Infrastructure                                       Equipment

Total Estimated Costs : \$13,196,000

Anticipated Source(s) of Funds : State and Non-State

Type of construction :

Seismic Retrofit :

If Existing - Age :

If Existing - Condition :

**Anticipated Time Schedule**

	Land Acquisition	Preliminary Plans	Working Drawing	Construction	Equipment	Occupancy
Year		2013/2014	2013/2014	2014/2015	2014/2015	2015/2016
Estimated Cost		\$451,000	\$496,000	\$11,696,000	\$553,000	

**Explain why this project is needed:**

This project provides for expanding library and AV/TV space in response to growth in enrollment and provide permanent facilities for learning resource functions presently located in temporary facilities. The reading/writing lab is brought into the library and Bldg 2600 temporary is removed. In addition it remodels existing spaces to provide for spaces that better respond to new technologies, study practices, and media applications.

District Priority No.: **6 LIBRARY REMODEL/ADDITION**

**Outline of Project Space - Buildings and Remodelings**

	Classroom Type 100's	Laboratory 210 - 255	Office Type 300's	Library Type 400's	AV - TV 530 - 535	All Other	Total ASF
Project Primary			1,521	24,412	5,376	619	31,928
Project Secondary			-1,747	-22,428	-1,721	-528	-26,424
Project Net ASF			-226	1,984	3,655	91	5,504

**Project Net Capacity**

Classrooms, Classroom Service (Room Type 100's)	Net ASF	ASF/100 WSCH	Capacity WSCH
<b>Classroom Totals . . . . .</b>	<b>0</b>	47.3	<b>0</b>

**Laboratories and Laboratory Service Areas (Room Types 210, 215, 220, 225, 230, 235, 255)**

Primary Effect				Secondary Effect			
TOP Code/Description	Net ASF	ASF/100 WSCH	Capacity WSCH	TOP Code/Description	Net ASF	ASF/100 WSCH	Capacity WSCH
<b>Laboratory Totals . . . . .</b>				<b>0</b>			

Office and Office Service Areas (Room Type 300's)	Net ASF	ASF per FTE	Capacity FTE
<b>Office Totals . . . . .</b>	<b>-226</b>	140	<b>-1.61</b>

**Project Intent And Scope**

Imperial Valley College

District Priority : **7 BLDG 7 - GYM - MODERNIZATION**

Project Type :     Site Acquisition                       New Construction                       Reconstruction  
                           Replacement                                       Infrastructure                               Equipment

Total Estimated Costs : \$2,280,000

Anticipated Source(s) of Funds : Non-State

Type of construction :

Seismic Retrofit :

If Existing - Age :

If Existing - Condition :

**Anticipated Time Schedule**

	Land Acquisition	Preliminary Plans	Working Drawing	Construction	Equipment	Occupancy
Year		2014/2015	2014/2015	2015/2016	2015/2016	2016/2017
Estimated Cost		\$200,000	\$80,000	\$2,000,000	\$0	

**Explain why this project is needed:**

This project modernizes the gymnasium. The physical education programs have undergone significant changes since the building was originally constructed in 1962. The need for locker space has diminished while the need for spaces for health and wellness and fitness have increased. This project addresses these issues as well as other issues related to the teaching/learning environment.

**Project Intent And Scope**

Imperial Valley College

District Priority No.: **7 BLDG 7 - GYM - MODERNIZATION**

**Outline of Project Space - Buildings and Remodelings**

	Classroom Type 100's	Laboratory 210 - 255	Office Type 300's	Library Type 400's	AV - TV 530 - 535	All Other	Total ASF
Project Primary			455			30,291	30,746
Project Secondary			-455			-30,291	-30,746
Project Net ASF							0

**Project Net Capacity**

Classrooms, Classroom Service (Room Type 100's)	Net ASF	ASF/100 WSCH	Capacity WSCH
<b>Classroom Totals . . . . .</b>	<b>0</b>	<b>47.3</b>	<b>0</b>

**Laboratories and Laboratory Service Areas (Room Types 210, 215, 220, 225, 230, 235, 255)**

Primary Effect				Secondary Effect			
TOP Code/Description	Net ASF	ASF/100 WSCH	Capacity WSCH	TOP Code/Description	Net ASF	ASF/100 WSCH	Capacity WSCH
<b>Laboratory Totals . . . . .</b>				<b>0</b>			

Office and Office Service Areas (Room Type 300's)	Net ASF	ASF per FTE	Capacity FTE
<b>Office Totals . . . . .</b>	<b>0</b>	<b>140</b>	<b>0.00</b>



**Project Intent And Scope**

Imperial Valley College

District Priority : **8 BLDG 10 - COUNSELING/FIN. AID MODERNIZATION**

Project Type :     Site Acquisition                       New Construction                       Reconstruction  
                           Replacement                                       Infrastructure                               Equipment

Total Estimated Costs : \$1,715,000

Anticipated Source(s) of Funds : Non-State

Type of construction :

Seismic Retrofit :

If Existing - Age :

If Existing - Condition :

**Anticipated Time Schedule**

	Land Acquisition	Preliminary Plans	Working Drawing	Construction	Equipment	Occupancy
Year		2015/2016	2015/2016	2016/2017	2016/2017	2017/2018
Estimated Cost		\$15,000	\$80,000	\$1,500,000	\$120,000	

**Explain why this project is needed:**

This project addresses the need to reconfigure and modernize this 40 year old building to better meet the needs of student services. Circulation into and through the building as well as issues related to privacy are addressed by the project.

**Project Intent And Scope**

Imperial Valley College

District Priority No.: **8 BLDG 10 - COUNSELING/FIN. AID MODERNIZATION**

**Outline of Project Space - Buildings and Remodelings**

	Classroom Type 100's	Laboratory 210 - 255	Office Type 300's	Library Type 400's	AV - TV 530 - 535	All Other	Total ASF
Project Primary			5,931				5,931
Project Secondary			-5,931				-5,931
Project Net ASF							0

**Project Net Capacity**

Classrooms, Classroom Service (Room Type 100's)	Net ASF	ASF/100 WSCH	Capacity WSCH
<b>Classroom Totals . . . . .</b>	<b>0</b>	<b>47.3</b>	<b>0</b>

**Laboratories and Laboratory Service Areas (Room Types 210, 215, 220, 225, 230, 235, 255)**

Primary Effect				Secondary Effect			
TOP Code/Description	Net ASF	ASF/100 WSCH	Capacity WSCH	TOP Code/Description	Net ASF	ASF/100 WSCH	Capacity WSCH
<b>Laboratory Totals . . . . .</b>				<b>0</b>			

Office and Office Service Areas (Room Type 300's)	Net ASF	ASF per FTE	Capacity FTE
<b>Office Totals . . . . .</b>	<b>0</b>	<b>140</b>	<b>0.00</b>

**Project Intent And Scope**

Imperial Valley College

District Priority : **9 BLDG 1 - ADMINISTRATION MODERNIZATION**

Project Type :  Site Acquisition  New Construction  Reconstruction  
 Replacement  Infrastructure  Equipment

Total Estimated Costs : \$1,322,000

Anticipated Source(s) of Funds : Non-State

Type of construction :

Seismic Retrofit :

If Existing - Age :

If Existing - Condition :

**Anticipated Time Schedule**

	Land Acquisition	Preliminary Plans	Working Drawing	Construction	Equipment	Occupancy
Year		2015/2016	2015/2016	2016/2017	2016/2017	2017/2018
Estimated Cost		\$15,000	\$85,000	\$1,100,000	\$122,000	

**Explain why this project is needed:**

This project modernizes the administrative building. The building was constructed in 1962 and has not undergone a major renovation since its original construction. The interior spaces are poorly configured a split up impeding the flow of people and communication.

District Priority No.: **9 BLDG 1 - ADMINISTRATION MODERNIZATION**

**Outline of Project Space - Buildings and Remodelings**

	Classroom Type 100's	Laboratory 210 - 255	Office Type 300's	Library Type 400's	AV - TV 530 - 535	All Other	Total ASF
Project Primary			5,276			777	6,053
Project Secondary			-5,276			-777	-6,053
Project Net ASF							0

**Project Net Capacity**

Classrooms, Classroom Service (Room Type 100's)	Net ASF	ASF/100 WSCH	Capacity WSCH
<b>Classroom Totals . . . . .</b>	<b>0</b>	<b>47.3</b>	<b>0</b>

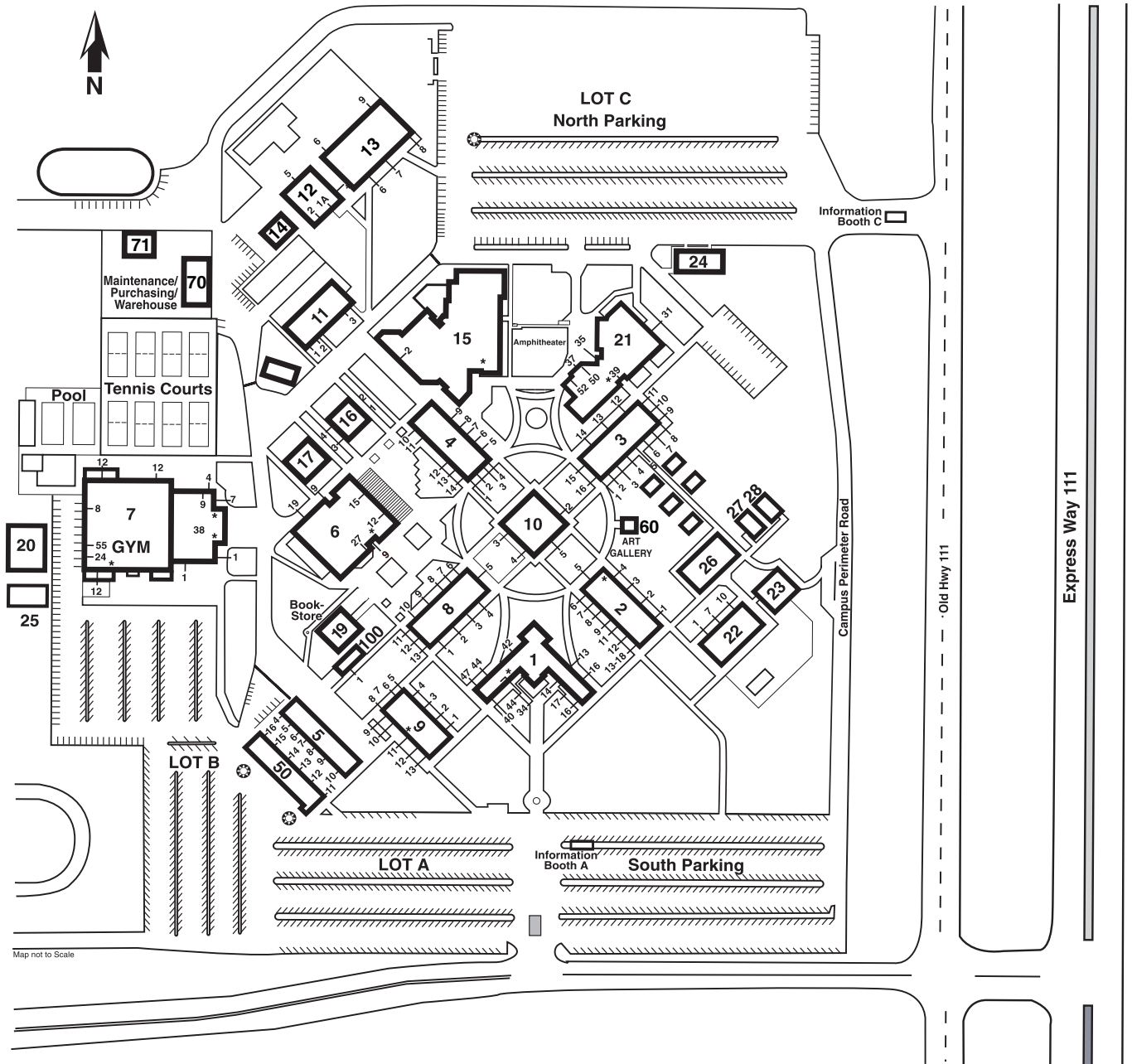
**Laboratories and Laboratory Service Areas (Room Types 210, 215, 220, 225, 230, 235, 255)**

Primary Effect				Secondary Effect			
TOP Code/Description	Net ASF	ASF/100 WSCH	Capacity WSCH	TOP Code/Description	Net ASF	ASF/100 WSCH	Capacity WSCH
<b>Laboratory Totals . . . . .</b>				<b>0</b>			

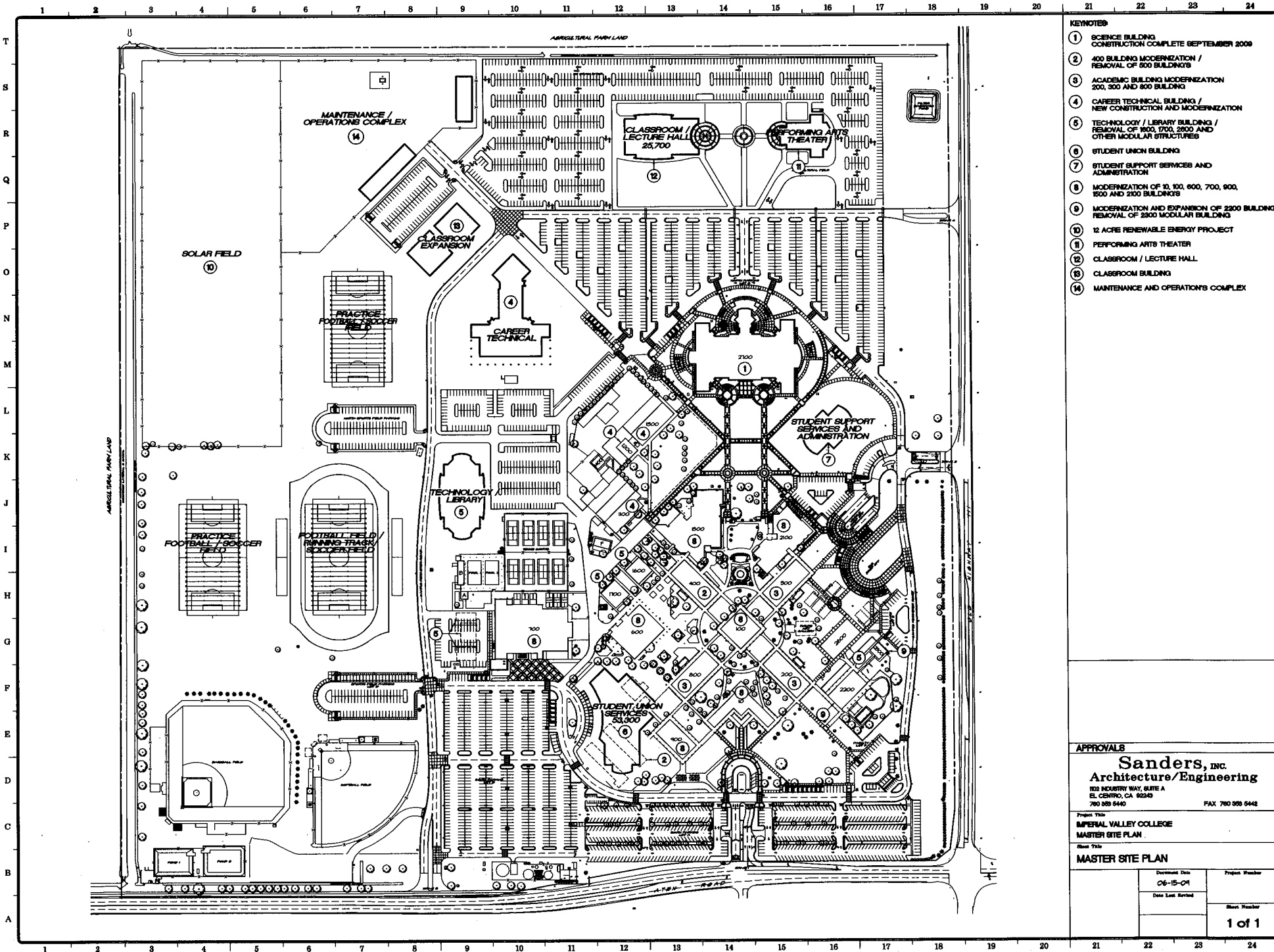
Office and Office Service Areas (Room Type 300's)	Net ASF	ASF per FTE	Capacity FTE
<b>Office Totals . . . . .</b>	<b>0</b>	<b>140</b>	<b>0.00</b>

# IMPERIAL VALLEY COLLEGE

## Campus Map & Directory



- |                           |                             |                          |                                |
|---------------------------|-----------------------------|--------------------------|--------------------------------|
| 1 Administration          | 9 Meyer Business Building   | 17 Workforce Dev. Center | 25 Math Lab                    |
| 2 Social Sciences/English | 10 Counseling/Financial Aid | 18 Carpenter Shop        | 26 Reading/Writing/Lang Lab II |
| 3 Fine Arts               | 11 Auto Tech I              | 19 Bookstore             | 27 2700 Building               |
| 4 Science                 | 12 Welding                  | 20 Assessment Center     | 28 2800 Building               |
| 5 Classroom 500A          | 13 Auto Tech II             | 21 Health Sciences       | 50 Classroom 500B/Repro        |
| 6 College Center          | 14 Tool Storage             | 22 Preschool Center      | 60 Art Gallery                 |
| 7 Gymnasium               | 15 Library Media Center     | 23 Infant Toddler Center | 70 Maintenance                 |
| 8 Business                | 16 Reading/Writing Lab I    | 24 Human Resources       | 71 Vehicle Shed                |
|                           |                             |                          | 100 Student Affairs            |



- KEYNOTES**
- 1 SCIENCE BUILDING  
CONSTRUCTION COMPLETE SEPTEMBER 2009
  - 2 400 BUILDING MODERNIZATION /  
REMOVAL OF 500 BUILDINGS
  - 3 ACADEMIC BUILDING MODERNIZATION  
200, 300 AND 800 BUILDING
  - 4 CAREER TECHNICAL BUILDING /  
NEW CONSTRUCTION AND MODERNIZATION
  - 5 TECHNOLOGY / LIBRARY BUILDING /  
REMOVAL OF 1600, 1700, 2600 AND  
OTHER MODULAR STRUCTURES
  - 6 STUDENT UNION BUILDING
  - 7 STUDENT SUPPORT SERVICES AND  
ADMINISTRATION
  - 8 MODERNIZATION OF 10, 100, 600, 700, 900,  
1500 AND 2100 BUILDINGS
  - 9 MODERNIZATION AND EXPANSION OF 2500 BUILDING  
REMOVAL OF 2800 MODULAR BUILDING
  - 10 12 ACRE RENEWABLE ENERGY PROJECT
  - 11 PERFORMING ARTS THEATER
  - 12 CLASSROOM / LECTURE HALL
  - 13 CLASSROOM BUILDING
  - 14 MAINTENANCE AND OPERATIONS COMPLEX

**APPROVALS**

**Sanders, Inc.**  
**Architecture/Engineering**  
 102 INDIAN WY, SUITE A  
 EL CENTRO, CA 92540  
 760 938 6440 FAX 760 938 6442

Project Title  
**IMPERIAL VALLEY COLLEGE  
 MASTER SITE PLAN**

Sheet Title  
**MASTER SITE PLAN**

Drawn Date <b>06-15-09</b>	Project Number 
Date Last Revised 	Sheet Number <b>1 of 1</b>